



GAT MONTHLY MEMBERSHIP PROGRESS REPORT

Results as of: 5/31/2023

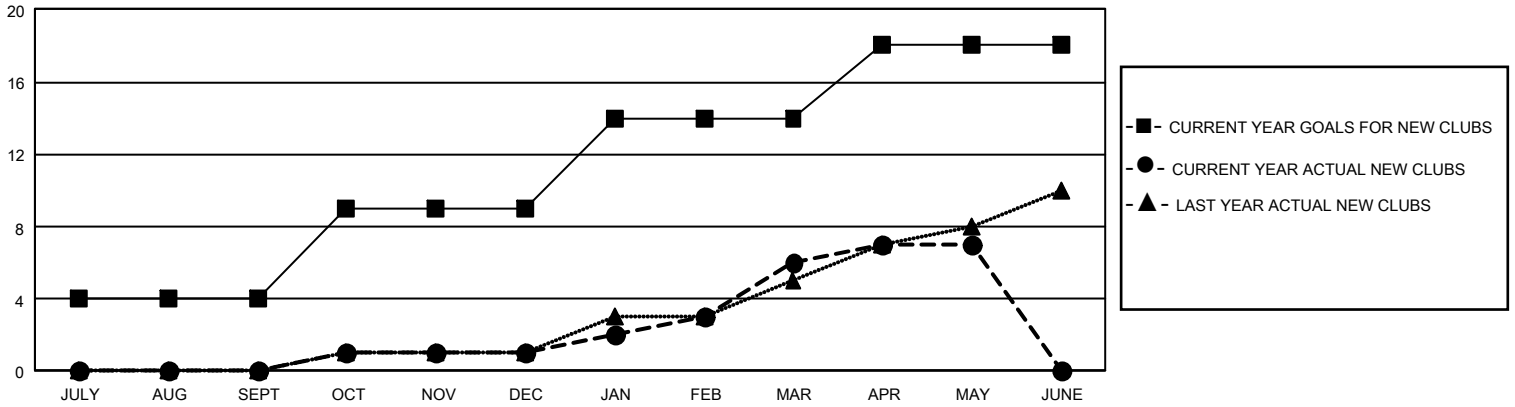
GMT Constitutional Area 5 - J, Group H

REPORT DOES NOT INCLUDE CLUBS IN UNDISTRICTED AREAS.

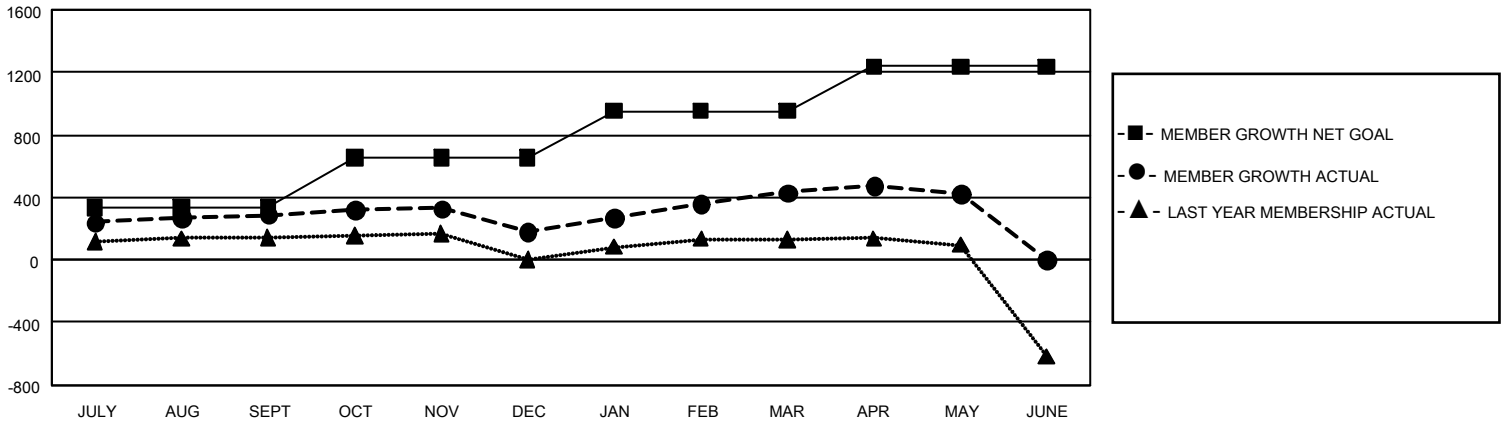
Clubs			
RESULTS FOR 2022-2023			
QUARTER	NEW CLUB GOAL	NEW CLUBS	DROPPED CLUBS
JULY/AUG/SEPT	12	0	1
OCT/NOV/DEC	15	1	0
JAN/FEB/MAR	15	5	0
APR/MAY/JUNE	12	1	0

Members			
RESULTS FOR 2022-2023			
QUARTER	MEMBER GROWTH NET GOAL	MEMBER GROWTH ACTUAL	DROPPED MEMBERS ACTUAL (including transfers)
JULY/AUG/SEPT	334	616	289
OCT/NOV/DEC	320	249	352
JAN/FEB/MAR	300	542	286
APR/MAY/JUNE	285	226	221

GOALS AND ACTUAL NEW CLUBS CUMULATIVE



GOALS AND ACTUAL MEMBERS CUMULATIVE



DROPPED CLUBS: 1	456 CLUBS OF 686 ADDED 1 OR MORE NEW MEMBERS	<u>GENDER DISTRIBUTION</u>	
<u>DROPPED MEMBERS</u>		MALE	17,564 (74.62%)
DECEASED	178	FEMALE	5,975 (25.38%)
CLUB CANCELLED	0	NON BINARY	0 (0.00%)
OTHER	970	PREFER NOT TO ANSWER	0 (0.00%)
TOTAL	1,148	TOTAL FAMILY UNIT MEMBERS	8,850
	CLICK HERE FOR CUMULATIVE MEMBERSHIP DATA	FAMILY MEMBERS PAYING HALF DUES	4,903